



Elegant First-Floor Apartment with Lift, Porter and
Private Outdoor Space

INVERNESS TERRACE

BAYSWATER, W2

£2,200 per week

**BERKSHIRE
HATHAWAY**
HOMESERVICES

LONDON

PROPERTY DETAILS

Guide Price

£2,200 per week

Square Footage

1,800

Council Tax Band

G

EPC Rating

C

Spacious Three-Bedroom Apartment with Lift, Porter and Balcony – Bayswater W2

A large lateral three-bedroom apartment situated on the first floor of a well-maintained building with lift and day porter. Spanning approximately 1,800 sq ft, this bright and well-proportioned property benefits from access to both Queensway and Inverness Terrace, with parking available by separate negotiation.

The accommodation comprises a generous reception room with dining area, a separate fully fitted kitchen with utility room, three double bedrooms with fitted wardrobes, two en-suite bathrooms, and an additional guest WC. Further highlights include a private balcony overlooking Queensway and a patio garden to the rear.

Inver Court enjoys an excellent location just moments from Queensway Underground Station, Bayswater, and the wide range of shops, restaurants, and cafés in the area. Hyde Park and Paddington Station are also within easy walking distance.

FEATURES

Three Bedrooms

Two Reception Rooms

Two Bathrooms

Lift

Concierge / Porter

Garden Patio

Balcony

First Floor

LOCATION

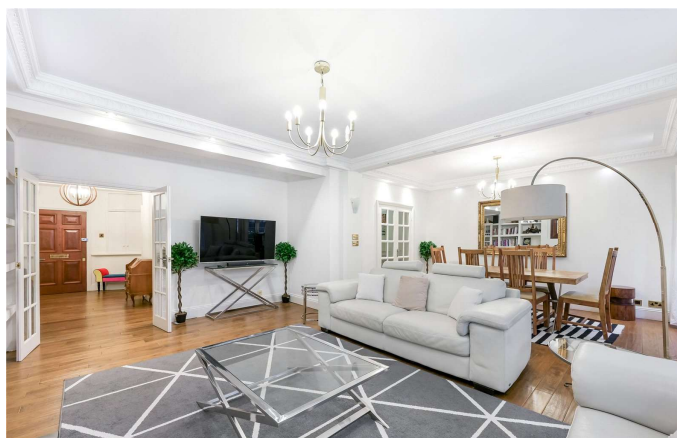


HYDE PARK LETTINGS

24-25 Albion Street, W2 2AX

020 7262 2030

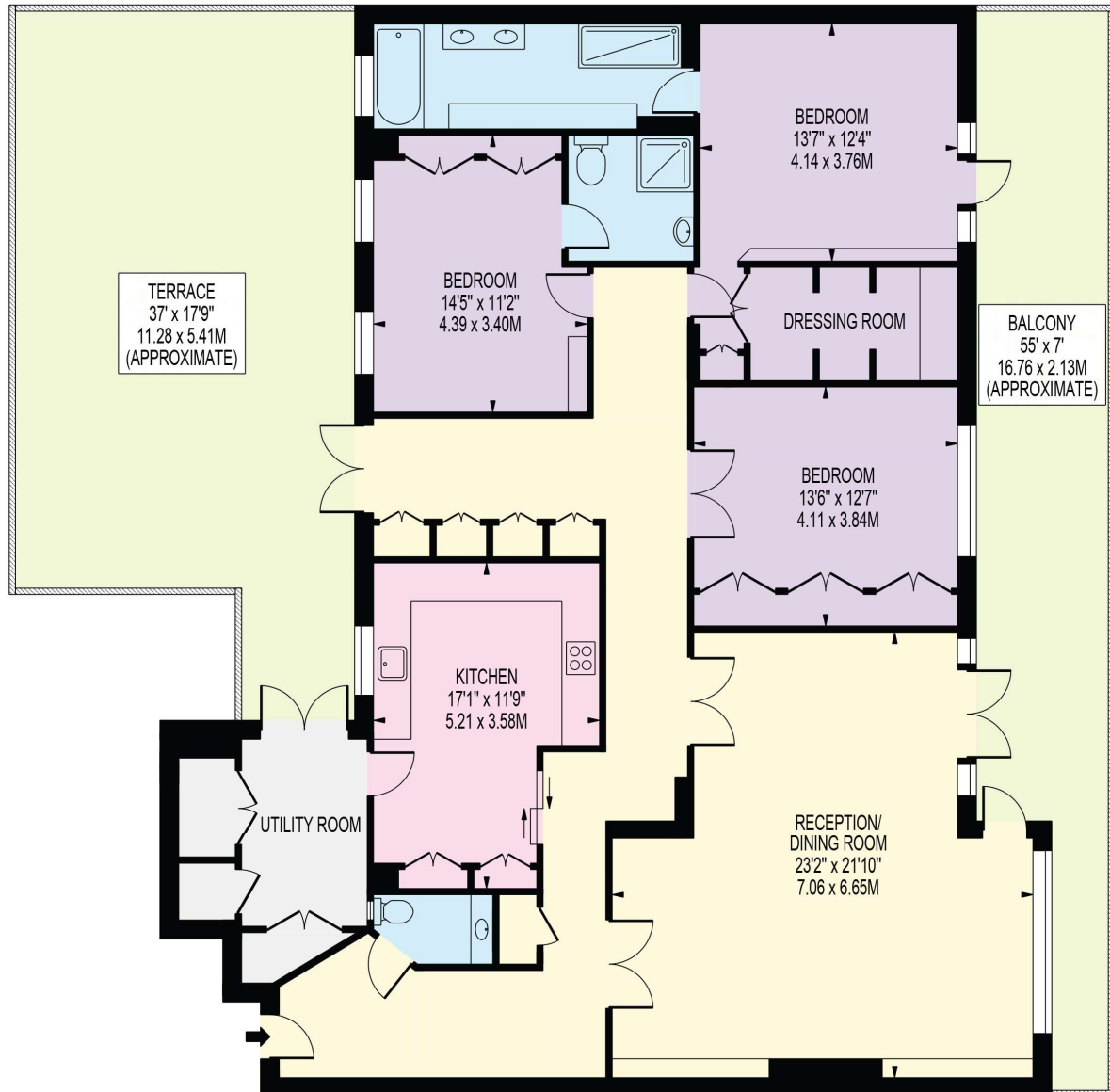
lettings.hydepark@bhhs-london.com



FLOORPLAN

INVER COURT

APPROXIMATE GROSS INTERNAL FLOOR AREA: 1871 SQ FT - 173.84 SQ M



FIRST FLOOR

FOR ILLUSTRATION PURPOSES ONLY

THIS FLOOR PLAN SHOULD BE USED AS A GENERAL OUTLINE FOR GUIDANCE ONLY AND DOES NOT CONSTITUTE IN WHOLE OR IN PART AN OFFER OR CONTRACT. ANY INTENDING PURCHASER OR LESSEE SHOULD SATISFY THEMSELVES BY INSPECTION, SEARCHES, ENQUIRIES AND FULL SURVEY AS TO THE CORRECTNESS OF EACH STATEMENT. ANY AREAS, MEASUREMENTS OR DISTANCES QUOTED ARE APPROXIMATE AND SHOULD NOT BE USED TO VALUE A PROPERTY OR BE THE BASIS OF ANY SALE OR LET.