



BERKSHIRE HATHAWAY
HomeServices
London Marler & Marler



MERCHANT SQUARE EAST

PADDINGTON, W2

Lateral Apartment in the Heart of Paddington with Roof Terrace

£2,500 Per Week

£10,833.33 pcm

MERCHANT SQUARE EAST

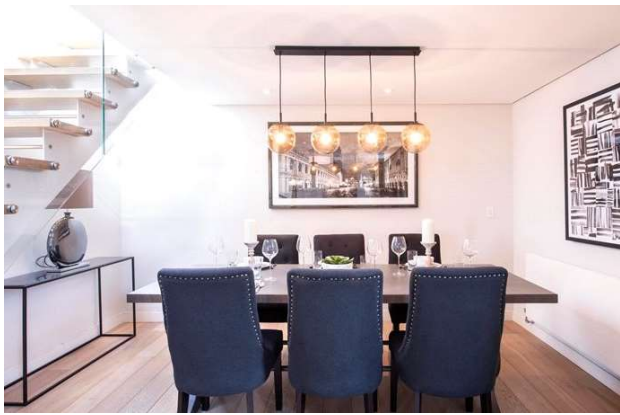
PADDINGTON, W2

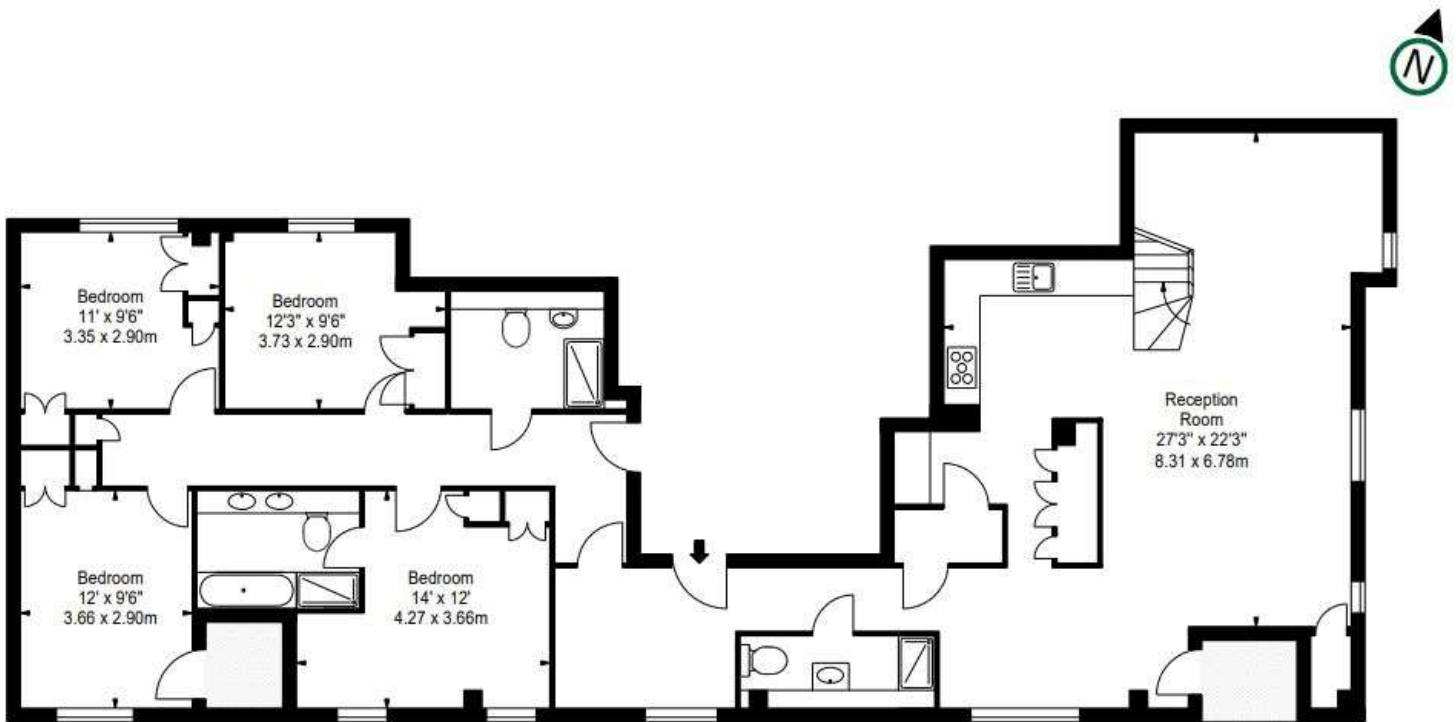
We are pleased to offer this stunning interior designed apartment, set within the heart of Paddington Basin and close to the popular West End Quay. The apartment is situated on the fifteenth floor of this prestigious building which features 24 hour concierge service, lift service, and secure underground parking. This apartment comprises a beautiful reception room with superb views over the Grand Union Canal, a modern open plan kitchen, four bedrooms, three bathrooms, a guest WC, and ample storage space. The apartment offers excellent access to transport links such as Paddington Train Station (Bakerloo, Hammersmith & City, Circle, District lines and Heathrow) and Edgware Road (Circle, District and Bakerloo lines) both within a short walk.

- Long Let
- Four Bedrooms
- One Reception Room
- Three Bathrooms
- Apartment
- Upper Floor
- Roof Terrace
- Private Parking
- New Development
- Concierge/Porter
- 24 Hour Security
- Lift
- Furnished
- Unfurnished
- 1579 Sq Ft Approximately

EPC RATING: **B**







Hyde Park & Bayswater

Lettings

24-25 Albion Street

020 7262 2030

lettings.hydepark@bhhsLondon.com

BHHSLondon.com



BERKSHIRE HATHAWAY
HomeServices

London Marler & Marler

Consumer Protection from Unfair Trading Regulations 2008. These details are for guidance only and complete accuracy cannot be guaranteed. If there is any point, which is of particular importance, verification should be obtained. They do not constitute a contract or part of a contract. All measurements are approximate. No guarantee can be given with regard to planning permissions or fitness for purpose. No apparatus, equipment, fixture or fitting has been tested. Items shown in photographs are NOT necessarily included. Interested Parties are advised to check availability and make an appointment to view before travelling to see a property.