

EST. 1982

**KAY & CO**

LONDON



## Modern Complex with Stunning Water Views

Merchant Square East, Paddington, W2

- Three Bedrooms
- Two Bathrooms
- One Reception Room
- Concierge/Porter, 24 Hour Security
- Lift
- 943 Sq. Ft (Approximately)

**£1,295 Per Week**

020 7262 2030  
kayandco.com

**Accommodation**

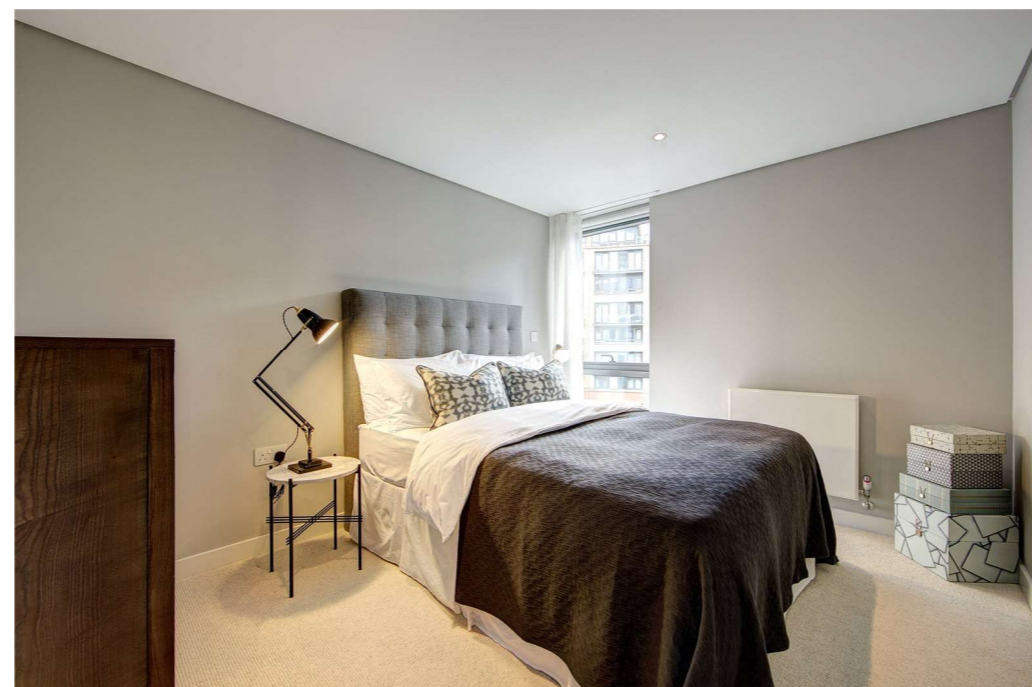
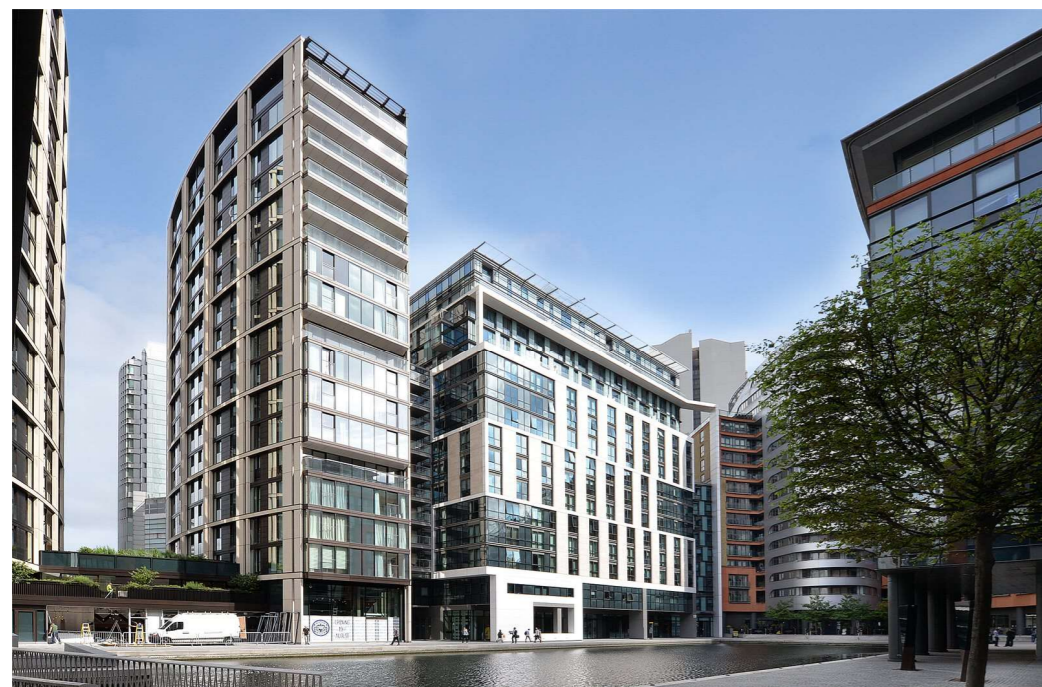
A contemporary, three bedroom flat in the popular Merchant Square development at Paddington. This property is on the second floor (with lift) and is finished to a high standard throughout. The accommodation comprises three bedrooms, two bathrooms, spacious and modern open-plan kitchen/reception room. Available Now.

(NB: Photos represent typical two bedroom apartment within the complex).

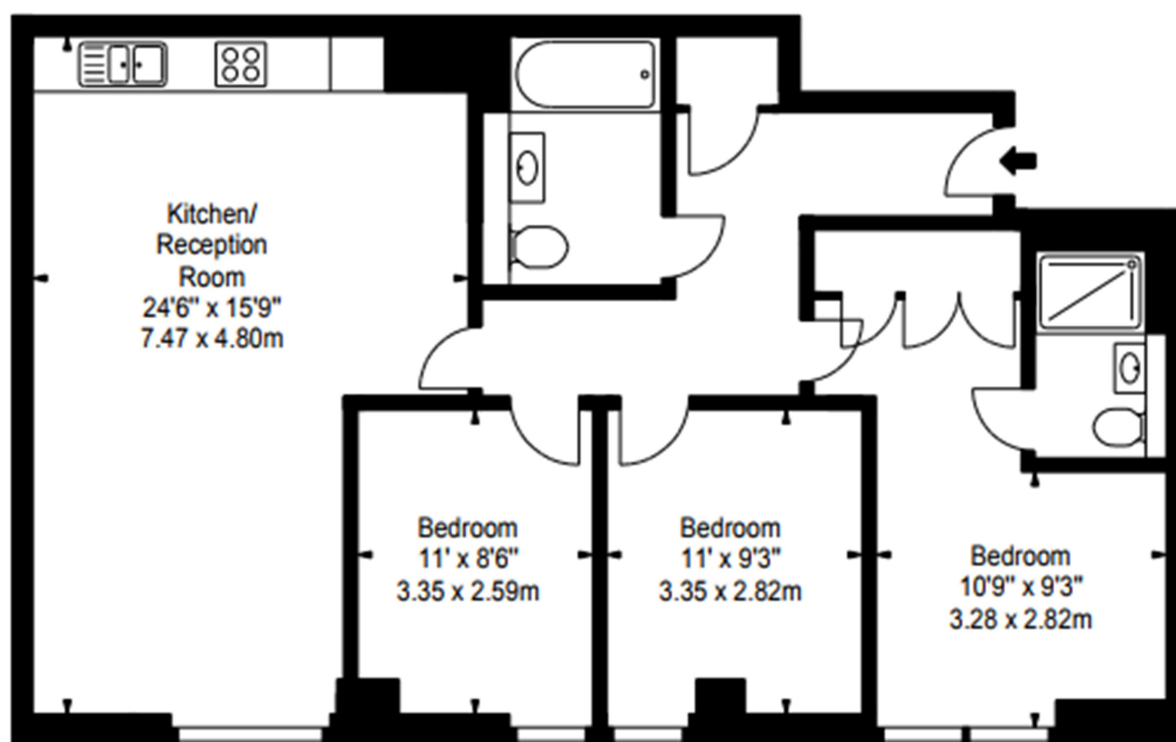
**Location**

Excellent amenities and transport links; Paddington Train Station (Bakerloo, Hammersmith & City, Circle, District lines and Heathrow) Edgware Road (Circle, District and Bakerloo lines).

**Tenure** – Long Let



## Floor Plan

**Accommodation**

Three Bedrooms • Two Bathroom • Water Views • Concierge/Porter, 24  
Hour Security, Lift • Exclusive Deals at Local Restaurants and Gyms •  
Private, Underground Parking • Energy Rating: B