



Light-Filled Apartment with Dual Terraces and
Serene Little Venice Views

RANDOLPH AVENUE

LITTLE VENICE, W9

£6,265 per week

**BERKSHIRE
HATHAWAY**
HOMESERVICES

LONDON

PROPERTY DETAILS

Guide Price

£6,265 per week

Square Footage

2320

Council Tax Band

G

EPC Rating

B

The generously proportioned interiors are bathed in natural light through large windows with views over the Little Venice rooftops and the private gardens below. Through the kitchen is a generous terrace with outdoor seating, and there is also a terrace directly accessed from the living room. A charming working fireplace further elevates the living area. This apartment is fully air conditioned with private lift access.

FEATURES

Four Bedrooms

One Reception Room

Four Bathrooms

Residents Parking

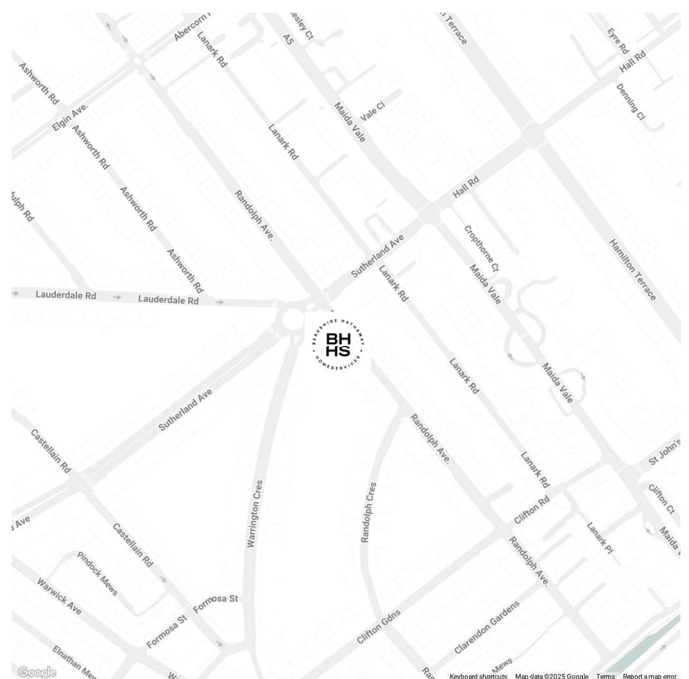
Concierge / Porter

Lift

Roof Terrace

Communal Gardens

LOCATION

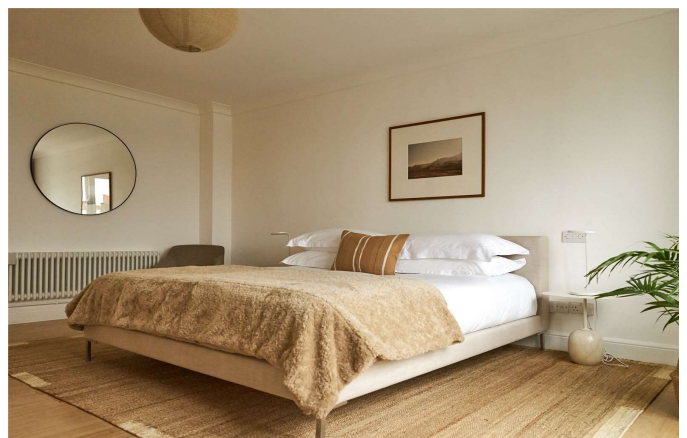


HYDE PARK LETTINGS

24-25 Albion Street, W2 2AX

020 7262 2030

lettings.hydepark@bhhs-london.com



FLOORPLAN

